

The logo for AGTIV, featuring the word "AGTIV" in a bold, blue, sans-serif font. A registered trademark symbol (®) is located to the right of the letter "V".

# AGTIV<sup>®</sup>

A dark blue horizontal bar containing the text "FIELD CROPS | GUIDE 2025" in white, bold, sans-serif font. The background of the entire image is a split landscape: the left side shows a golden wheat field, and the right side shows a field of purple flowers under a cloudy sky.

**FIELD CROPS | GUIDE 2025**

# AGTIV®

DESIGNED BY NATURE. PERFECTED BY SCIENCE.



## CONTENTS

### PRODUCT OFFER

- [BENEFITS FOR FIELD CROPS](#)
- [EFFECTIVE ON FIELD CROPS](#)
- [PRODUCTS INFORMATION](#)
- [COMPLEMENTARY EQUIPMENT](#)

### REPORTS SUMMARY

- [YIELD RESULTS](#)
- [COMPATIBILITY WITH PESTICIDES AND FERTILIZERS](#)

### AGTIV®

- [OUR TECHNOLOGIES](#)
- [OUR PRODUCTS](#)

### TOOLS

- [ONLINE TOOLS](#)

# BENEFITS FOR FIELD CROPS

**AGTIV® REACH™** creates the expansion of the root network by hyphae to reach further and uptake more nutrients and water, increasing resistance to stresses.

**AGTIV® REACH™** ensures your plants are **stronger**, **healthier** and **more vigorous**.



# EFFECTIVE ON FIELD CROPS

# AGTIV<sup>®</sup>

## DRY BEANS

## FORAGES

Ontario (Canada)

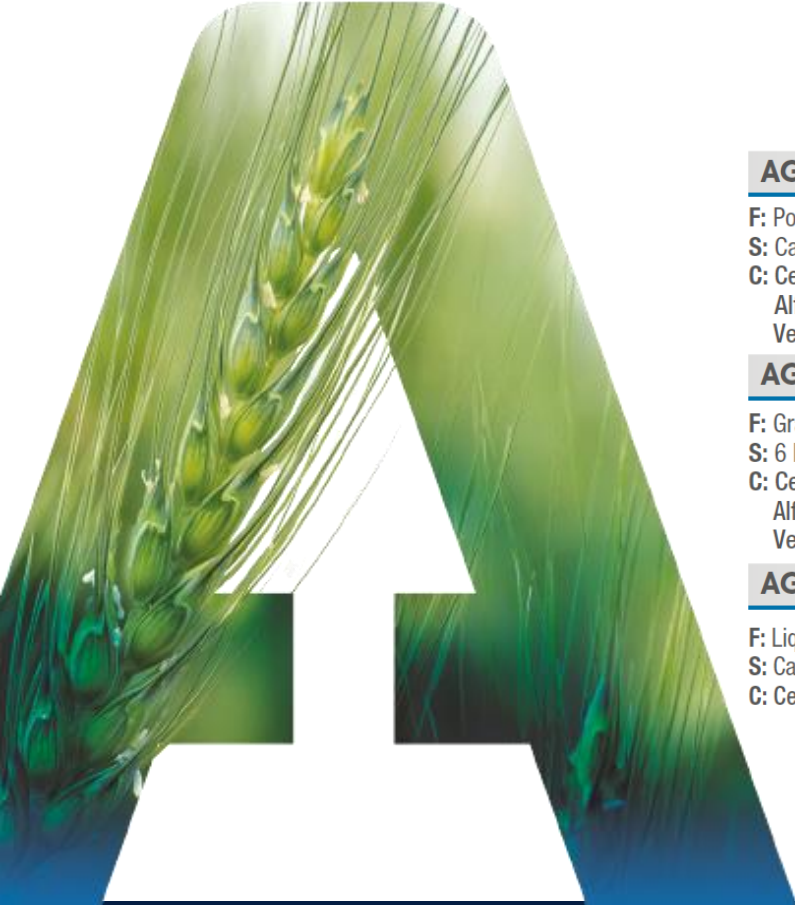


Ontario (Canada)



# AGTIV® REACH™

# AGTIV®



ACTIVE INGREDIENT(S)	APPLICATION MODE					FORMULATION
	ORGANIC	GRANULAR IN-FURROW	MIXING WITH SEEDS	LIQUID IN-FURROW	LIQUID ON SEED	

## AGTIV® REACH™ P

**F:** Powder (peat)  
**S:** Case of 4 x 800 g (4 x 1.75 lb) pails  
**C:** Cereal, flax & dry bean: **32 ha (80 acres)** per case  
 Alfalfa, mix forages & grass: **16 ha (40 acres)** per case  
 Vegetables, berries & garlic: see page “Specialty Crops” for details.

M	✓	●				●●●●●●●●
---	---	---	--	--	--	----------

## AGTIV® REACH™ G

**F:** Granules (peat)  
**S:** 6 kg (13.2 lb) pail – 18.2 kg (40 lb) bag – 364 kg (800 lb) tote bag  
**C:** Cereal, flax & dry bean: Bag: **4 ha (10 acres)** – Tote bag: **80 ha (200 acres)**  
 Alfalfa, mix forages & grass: Bag: **45 kg of seeds (99 lb)** – Tote bag: **720 kg of seeds (1584 lb)**  
 Vegetables, herbs, berries & fruit trees: see page “Specialty Crops” for details.

M	*	●				●●●●●
---	---	---	--	--	--	-------

## AGTIV® REACH™ L

**F:** Liquid (spores in suspension)  
**S:** Case of 2 x 950 ml (2 x 32 fl. oz) bottles  
**C:** Cereal, flax & bean: **16 ha (40 acres)** per case

M	✓		●			●
---	---	--	---	--	--	---



**F:** Formulation  
**S:** Size  
**C:** Coverage

✓ For organic use  
 \* Non eligible for organic use.  
 Contact us for more details.

[PTAGTIV.COM](http://PTAGTIV.COM)

# AGTIV® REACH™

## ON-FARM MIXING WITH SEEDS

### AGTIV® REACH™ P



#### ACTIVE INGREDIENT:

**M** MYCORRHIZAE – PTB297 Technology  
*Rhizophagus irregularis*: 8000 viable spores/g

**COVERS**  
**80**  
**acres**

#### INERT INGREDIENT:

Peat  
PARTICLE SIZE: < 1 mm (18 mesh)  
BULK DENSITY: 400 g/L (1 lb/US dry qt)

SIZE	COVERS	CODE
4 x 800 g (4 x 1.75 lb) – pails	Cereal, flax & dry bean: 32 ha (80 acres) Alfalfa, mix forages & grass: 16 ha (40 acres)	712324

#### DIRECTIONS FOR USE

Mix evenly with seeds at the bottom of the grain auger while filling drill, or directly in the drill box. Ensure uniform seed coverage is obtained.

Cereals, flax & dry beans: apply at 100 g/ha (40 g or 1.4 oz/acre).  
Alfalfa, mix forages & grass: apply at 200 g/ha (80 g or 2.8 oz/acre).

## GRANULAR IN-FURROW

### AGTIV® REACH™ G



#### ACTIVE INGREDIENT:

**M** MYCORRHIZAE – PTB297 Technology  
*Rhizophagus irregularis*: 178 viable spores/g

**COVERS**  
**10/200**  
**acres**

#### INERT INGREDIENT:

Peat  
PARTICLE SIZE: 0.5 mm to 2.5 mm (8 - 30 mesh)  
BULK DENSITY: 600 g/L (37.4 lb/ft³)

SIZE	COVERS	CODE
18.2 kg (40 lb) – bag	4 ha (10 acres)	712101
364 kg (800 lb) – tote bag	80 ha (200 acres)	712102

#### DIRECTIONS FOR USE

Apply in the seed row at a rate of 4.5 kg/ha (4 lb/acre).

## LIQUID FOR IN-FURROW

### AGTIV® REACH™ L



#### ACTIVE INGREDIENT:

**M** MYCORRHIZAE – PTB297 Technology  
*Rhizophagus irregularis*: 6400 viable spores/g

**COVERS**  
**40**  
**acres**

#### INERT INGREDIENT:

Water  
PARTICLE SIZE: < 0.2 mm (70 mesh)  
Contains non-soluble particles

SIZE	COVERS (1 case)	CODE (case)
2 x 950 ml (2 x 32 fl. oz) – bottles	16 ha (40 acres)	712204

#### DIRECTIONS FOR USE

One 950 ml bottle covers 8 ha (20 acres). Dilute the product in the required volume of clean, non-chlorinated water, according to the product label. Shake the bottle well before use and maintain a constant agitation in the tank during application to avoid settling and clogging. Apply directly in the seed row.

**LIQUID INJECTION** — To apply using the AGTIV® Liquid Injection Kit, prepare the product mixture and adjust the Dosatron® injection rate following the application chart and video at [PTAGTIV.COM/en/liquid-injection-kit](http://PTAGTIV.COM/en/liquid-injection-kit). If the mixture does not contain pesticides or fertilizers, it can be emptied, refrigerated and used within 24 hours.

**TANK MIX** — Refer to [PTAGTIV.COM/en/REACH-L](http://PTAGTIV.COM/en/REACH-L) for application details.

# PROGRAM

## AGTIV<sup>®</sup> LIQUID INJECTION KIT

AGTIV<sup>®</sup>

- The AGTIV<sup>®</sup> Liquid Injection Kit is designed to apply the AGTIV<sup>®</sup> liquid products.
- The kit must be installed on the existing in-furrow liquid system of the planter as shown in the application videos.
- The mycorrhizae must be injected directly in the furrow close to the seeds.
- **GOAL:** To facilitate the use and application of the AGTIV<sup>®</sup> with maximum accuracy and without affecting the mycorrhizae spores and in-furrow equipment.



# YIELD INCREASE

# AGTIV<sup>®</sup>



**BARLEY**



**380 kg/ha**  
8.4%

**AGTIV<sup>®</sup> REACH<sup>™</sup>**  
30 sites over 12 years,  
Canada and Europe



**DRY BEAN**



**236 lb/ac**  
8.1%

**AGTIV<sup>®</sup> REACH<sup>™</sup>**  
15 sites over 10 years, North America



**DURUM WHEAT**



**237 kg/ha**  
5.8%

**AGTIV<sup>®</sup> REACH<sup>™</sup>**  
14 sites over 12 years, North America



**FORAGE**



**576 kg/ha**  
16.0%

**AGTIV<sup>®</sup> REACH<sup>™</sup> P**  
47 sites over 2 years, Canada



[CLICK HERE FOR DETAILS](#)



# AGTIV® REACH™ COMPATIBILITY

Single action mycorrhizae products **REACH** into the soil and help uptake more nutrients and water.

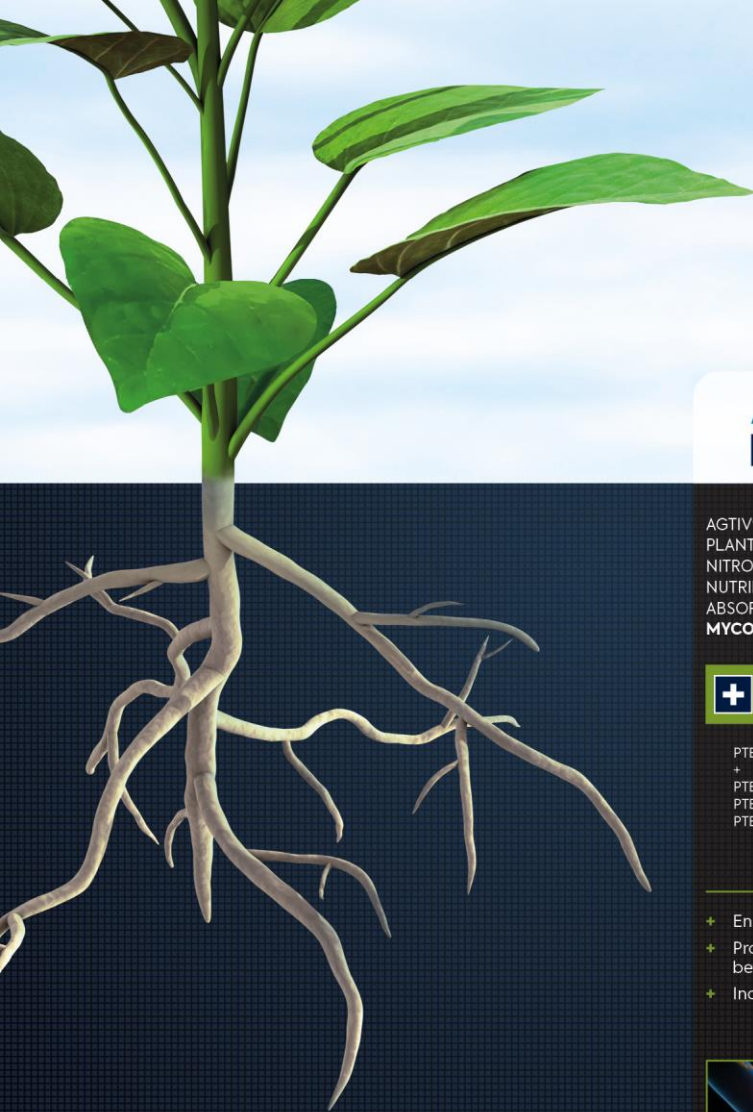
Mycorrhizae inoculant is compatible with most pesticides and liquid fertilizers.

**CLICK BELOW FOR ALL DETAILS**

**PESTICIDES**

**LIQUID FERTILIZER  
IN-FURROW**

**LIQUID FERTILIZER  
ON SEED**



# AGTIV.

## BIOLOGICAL ACTIVE INGREDIENTS

For more than 100 years, Premier Tech has been growing along with producers. Being a world leader in the industrial production of mycorrhizal inoculants has inspired us to go further in our search for natural technologies. Since then, we have introduced the benefits of *Bacillus*, rhizobium, and *Serendipita* to the agricultural market. Furthermore, we have combined these powerful technologies to improve the quality and the yield of crops for the benefit of our clients.

### AGTIV. THRIVE.

AGTIV® THRIVE™ POWERS PLANTS BY BOOSTING NITROGEN FIXATION, NUTRIENT AND WATER ABSORPTION THANKS TO **MYCORRHIZAE & RHIZOBIUM**

#### **+** MYCORRHIZAE + RHIZOBIUM

PTB297 Technology + PTB160 (pea & lentil) PTB162 (soybean) PTB161 (chickpea)

- + Enhances P uptake
- + Provides more energy for better nitrogen fixation
- + Increases photosynthesis



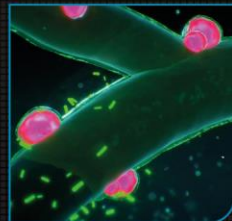
### AGTIV. ENRICH.

AGTIV® ENRICH™ STRENGTHENS LEGUME NITROGEN FIXATION AND PROVIDES A VIGOROUS ROOT SYSTEM THANKS TO **RHIZOBIUM & BACILLUS**

#### **+** RHIZOBIUM + BACILLUS

PTB162 Technology + PTB180 Technology

- + Increases nodulation and nitrogen fixation
- + Improves rooting environment
- + Enhances plant vigor and productivity



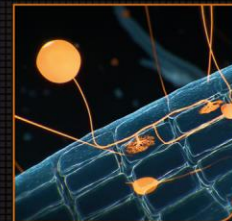
### AGTIV. REACH.

AGTIV® REACH™ HELPS PLANTS REACH AND ABSORB MORE NUTRIENTS AND WATER THANKS TO **MYCORRHIZAE**

#### **M** MYCORRHIZAE

PTB297 Technology, *Rhizophagus irregularis* (formerly known as *Glomus intraradices*)

- + Expands root system
- + Enhances nutrient and water uptake
- + Promotes plant robustness and vigor



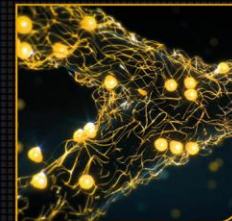
### AGTIV. IGNITE.

AGTIV® IGNITE™ IMPROVES PHOTOSYNTHESIS AND MITIGATES IMPACT OF ENVIRONMENTAL STRESSES THANKS TO **SERENDIPITA**

#### **S** SERENDIPITA

PTB299 Technology, *Serendipita indica*

- + Mitigates abiotic stresses
- + Increases photosynthesis rate
- + Enhances plant establishment, growth and yield



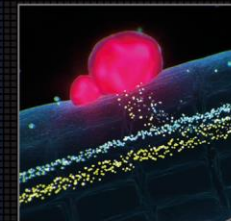
### AGTIV. FUEL.

AGTIV® FUEL™ FEEDS LEGUMES BY FIXING ATMOSPHERIC NITROGEN THANKS TO **RHIZOBIUM**

#### **R** RHIZOBIUM

PTB160 Technology (pea & lentil) *Rhizobium leguminosarum biovar viciae* PTB162 Technology (soybean) *Bradyrhizobium japonicum* PTB161 Technology (chickpea) *Mesorhizobium onobrychidis*

- + Increases nodulation
- + Fixes nitrogen
- + Provides nutrients to pulses



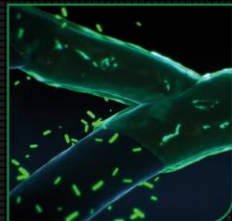
### AGTIV. STIMULATE.

AGTIV® STIMULATE™ REINFORCES PLANTS WITH A HEALTHY ROOT ZONE THANKS TO **BACILLUS**

#### **B** BACILLUS

PTB180 Technology, *Bacillus pumilus* PTB185 Technology, *Bacillus Inaquosorum*

- + Stimulates rooting environment
- + Improves plant establishment
- + Increases plant vigor and productivity



Learn more at

[PTAGTIV.COM/en/technologies](https://ptagtiv.com/en/technologies)

CLICK ON A PICTURE TO SEE THE TECHNOLOGY IN ACTION

Since entering the agriculture market 15 years ago, we are constantly widening our AGTIV® inoculant offering to suit and benefit more crops.

While staying true to the AGTIV® brand's three pillars: **NATURE, SCIENCE** and **PERFORMANCE**, we are introducing new product names reflecting the actions of our inoculants for plants.

**AGTIV FUEL**  
Single action **rhizobium** products FUEL legumes by fixing nitrogen for better growth.

**AGTIV THRIVE**  
Dual action **mycorrhizae** and **rhizobium** products make plants THRIVE by increasing nutrient uptake.

**AGTIV ENRICH**  
Dual action **rhizobium** and **Bacillus** collaborate to ENRICH the plant's nitrogen fixation with a healthy root system.

**AGTIV STIMULATE**  
Single action **Bacillus** products STIMULATE the plant to grow more efficiently with a healthy root zone.

**AGTIV IGNITE**  
Single action **Serendipita** products IGNITE plant growth and chlorophyll content for better yields.

**AGTIV REACH**  
Single action **mycorrhizae** products REACH into the soil and help uptake more nutrients and water.

# AGTIV®

**DESIGNED BY NATURE.  
PERFECTED BY SCIENCE.**

Born from **nature** and perfected by **science**, AGTIV® is an innovative technology brand made of high-quality and proven natural active ingredients that deliver superior **performance** for agricultural producers.

Discover more at

[PTAGTIV.COM/brand](https://PTAGTIV.COM/brand)

# ONLINE TOOLS



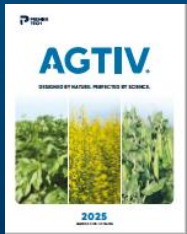
LABELS



EFFICACY REPORT



APPLICATION VIDEOS



BROCHURES



SOCIAL MEDIA

AND MUCH MORE:

[Safety data sheets](#), [organic certificates](#)

