



AGTIV[®]

POTATO GUIDE 2026

AGTIV[®]

DESIGNED BY NATURE. PERFECTED BY SCIENCE.



CONTENTS

PRODUCT OFFER

- [BENEFITS FOR POTATO](#)
- [EFFECTIVE ON POTATO](#)
- [PRODUCT INFORMATION](#)
- [RULES TO SUCCESS](#)
- [COMPLEMENTARY EQUIPMENT](#)

REPORTS SUMMARY

- [YIELD RESULTS](#)
- [COMPATIBILITY WITH PESTICIDES AND FERTILIZERS](#)

AGTIV[®]

- [OUR TECHNOLOGIES](#)
- [OUR PRODUCTS](#)

TOOLS

- [ONLINE TOOLS](#)

BENEFITS FOR POTATO

AGTIV REACH® creates the expansion of the root network by hyphae to reach further and uptake more nutrients and water, increasing resistance to stresses.

AGTIV REACH® ensures your plants are **stronger, healthier** and **more vigorous**.

AGTIV STIMULATE® provides a **healthy root zone** which leads to better yield. As a root colonizer, it stimulates the plant to **grow more efficiently**.



EFFECTIVE ON POTATO



Quebec (Canada)



Ontario (Canada)



Quebec (Canada)



Quebec (Canada)



Pays de la Loire (France)



Artois (France)

AGTIV REACH® and AGTIV STIMULATE®



POTATO

AGTIV REACH® L POTATO












F: Liquid (spores in suspension)
S: Case of 2 x 950 ml (2 x 32 fl. oz) bottles
C: Potato: 8 ha (20 acres) per case

AGTIV REACH® P POTATO

F: Powder
S: Case of 2 x 300 g (2 x 10.5 oz) bag
C: Potato: 16 ha (40 acres) per case

AGTIV STIMULATE® L POTATO

F: Liquid
S: 8 L (8 kg) bag-in-box
C: Potato: 8 ha (20 acres)

ACTIVE INGREDIENT(S)	ORGANIC	APPLICATION MODE				FORMULATION
		GRANULAR IN-FURROW	MIXING WITH SEEDS	LIQUID IN-FURROW	LIQUID ON SEED	
M						
M	*					
B						



AGTIV REACH® and AGTIV STIMULATE®

IN-FURROW APPLICATION OR SEED-PIECE TREATMENT

AGTIV REACH® L POTATO



ACTIVE INGREDIENT:

M MYCORRHIZAE – PTB297 Technology
Rhizophagus irregularis: 10 500 viable spores/g

COVERS
20
acres

INERT INGREDIENT: Water

PARTICLE SIZE: < 0.2 mm (70 mesh)

Contains non-soluble particles

SIZE	COVERS (1 case)	CODE (case)
2 x 950 ml (2 x 32 fl. oz) – bottles	8 ha (20 acres)	711004

DIRECTIONS FOR USE

IN-FURROW APPLICATION — Dilute the product in the required volume of clean, non-chlorinated water. Refer to the application charts available at PTAGTIV.COM/en/potato. Shake the bottle well before use and maintain a constant agitation in the tank during application to avoid settling and clogging. Apply directly on seed pieces into furrow.

SEED-PIECE TREATMENT — In a clean tank, pour the content of one 950 ml (32 fl. oz) bottle in the volume of liquid required to treat the amount of seed pieces for 4 hectares (10 acres) of seedbed (110 000 – 170 000 seed pieces). Shake the bottle well before use and maintain a constant agitation in the tank during application to avoid settling and clogging. Apply directly on seed pieces. Do not treat seed pieces more than 48 hours before seeding (could activate seed-piece sprouting).

IN-FURROW APPLICATION OR SEED-PIECE TREATMENT

AGTIV REACH® P POTATO



ACTIVE INGREDIENT:

M MYCORRHIZAE – PTB297 Technology
Rhizophagus irregularis: 67 000 viable spores/g

COVERS
40
acres

INERT INGREDIENT: Diatomaceous earth

PARTICLE SIZE: < 0.2 mm (70 mesh)

SIZE	COVERS	CODE (case)
2 x 300 g (2 x 10.5 oz) – pouches	16 ha (40 acres)	711104

DIRECTIONS FOR USE

Pour the content of a 300 g pouch into 5.7 liters of clean and non-chlorinated water. Mix well and maintain under agitation during application. Apply directly on seed pieces into furrow.

IN-FURROW APPLICATION

AGTIV STIMULATE® L POTATO



ACTIVE INGREDIENT:

B BACILLUS – PTB185 Technology
Bacillus inaquosorum: 2 x 10⁹ viable spores/g

COVERS
20
acres

INERT INGREDIENT: Water

PARTICLE SIZE: < 0.1 mm (150 mesh)

Contains non-soluble particles

SIZE	COVERS	CODE
8 L (8 kg) – bag-in-box	8 ha (20 acres)	711021

DIRECTIONS FOR USE

Apply inoculant in the furrow, directly on the seed pieces, at a rate of 1000 ml/ha (400 ml/acre).

RECOMMENDATIONS

IN-FURROW APPLICATION

RECOMMENDATIONS

LIQUID INJECTION:

The AGTIV® Liquid Injection Kit, integrating a Dosatron® pump, is a customized equipment designed for the precise application of AGTIV® liquid products. Easy to install on your existing in-furrow application system, it operates off the main solution flow.

- Ensure the tank and the liquid injection system are clean and free of chemical residues, and agitation system is operational.
- On the planter, remove all cylinder screens by the nozzles or use filters with openings of at least 50 mesh (0.28 mm).
- Prepare your product mixture and adjust the Dosatron® injection rate following the calculation chart and application video at PTAGTIV.COM/en/liquid-injection-kit.
- Spray band width should be limited to 7 in (18 cm) or less.
- If the mixture does not contain pesticides or fertilizers, it can be emptied, refrigerated and used within 24 hours.

TANK MIX:

- Use filters with openings of at least 50 mesh (0.28 mm).
- Use a diaphragm (or peristaltic) pump for product application.
- Up and down agitation at all times in the tank.
- Spray band width should be limited to 7 in (18 cm) or less.
- Apply within 6 hours after mixing into the liquid tank.
- See the application video at PTAGTIV.COM/en/potato.

SEED-PIECE TREATMENT

RECOMMENDATIONS

MILESTONE TREATER:

- Validate that the atomizing head and the mixing paddles correspond to the approved specifications.
Visit PTAGTIV.COM/en/equipment for more details or contact your representative.

OTHER MODELS:

- Validate that the atomizing head and the mixing paddles correspond to the approved specifications (ask your representative for more info).
- Use filters with openings of at least 50 mesh (0.28 mm).
- Use a diaphragm (or peristaltic) pump for product application.
- Up and down agitation at all times in the tank.



8 RULES TO SUCCESS

AGTIV®



-  Product must be refrigerated (2-8 °C, 36-46 °F). Store the product at constant temperature at all times. Do not freeze product.
-  Use filters with openings of at least 0.28 mm (50 mesh).
-  Use diaphragm pump for product application (or peristaltic pump).
-  Shake the bottle well before use and maintain a constant and effective agitation in the tank during application.
-  Band width should be limited to 7 in (18 cm) or less.
-  Do not treat seed pieces more than 48 hours before seeding.
-  Apply within 6 hours after mixing into the liquid tank.
-  Do not use after the best before date indicated on the label.

PROGRAM

AGTIV®

AGTIV® LIQUID INJECTION KIT

- The AGTIV® Liquid Injection Kit is designed to apply the AGTIV® liquid products.
- The kit must be installed on the existing in-furrow liquid system of the planter as shown in the application videos.
- The mycorrhizae must be injected directly in the furrow close to the seeds.
- **GOAL:** To facilitate the use and application of the AGTIV® with maximum accuracy and without affecting the mycorrhizae spores and in-furrow equipment.



POTATO YIELD RESULTS

AGTIV®



POTATO



31.6 cwt/ac
9.2%

AGTIV® REACH™ POTATO

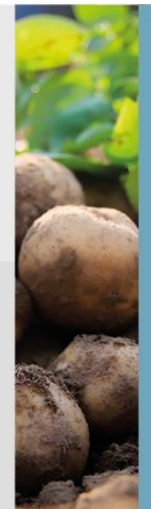
1199 sites over 14 years, North America and Europe



+10.3 cwt/ac

AGTIV® REACH™ + AGTIV® STIMULATE™

16 third-party trials over 4 years, North America



[CLICK HERE FOR DETAILS](#)

EFFICACY REPORT

SUMMARY - MYCORRHIZAL INOCULANT

► GROWER SPLIT FIELDS AND TRIALS

Research sites:

- Belgium;
- Canada;
- France;
- Germany;
- Mexico;
- Switzerland;
- United States.

Treatments:

- a) Untreated;
- b) AGTIV REACH® L POTATO*.

*Products applied according to manufacturers recommended rate.

Experimental design:

1197 split fields

Table 1. Average increase of marketable yield* with AGTIV REACH® L POTATO

Territory	Number of sites	Yield increase (t/ha)	Yield increase (cwt/ac)	Yield increase (%)
Canada	598	3.1	27.6	9.9
United States	67	3.3	29.8	10.8
Mexico	4	2.3	20.0	8.6
Belgium, France & Switzerland	496	4.1	36.3	9.9
Germany	32	4.2	37.4	10.0
Total	1197 sites	3.5 t/ha*	31.6 cwt/ac**	9.1%

Table 2. Average increase of marketable yield* with AGTIV REACH® L POTATO

Year	Number of sites	Yield increase (t/ha)	Yield increase (cwt/ac)	Yield increase (%)
2011	32	2.6	23.3	6.6
2012	33	3.2	28.5	9.0
2013	70	3.6	31.9	11.2
2014	116	4.5	40.3	12.8
2015	145	4.0	35.3	10.7
2016	243	3.9	34.8	10.5
2017	213	2.7	24.0	7.7
2018	113	3.4	30.2	11.2
2019	117	3.5	31.1	8.6
2020	49	2.9	25.6	9.8
2021	41	4.1	36.4	10.2
2022	12	3.4	29.2	7.8
2023	13	2.7	23.9	8
Total	1197 sites	3.5 t/ha*	31.6 cwt/ac**	9.1%

* Statistically significant at p<0.001 following a T test.

**cwt/ac = 100 lb/ac

EFFICACY REPORT

SUMMARY - MYCORRHIZAL & BACILLUS INOCULANT



► PLOT TRIALS

Research partners:

- AgriTech Inc
- Atlantic Agri Tech;
- New Marc Research;
- Prairie Ag Research;
- Progest inc.;
- Tall Pines Agricultural Research Ltd.;
- Wellington Agricultural Research Ltd.

Research sites:

- Alberta;
- Ontario;
- Prince-Edward Island;
- Quebec.

Treatments:

- a) AGTIV REACH® L POTATO*;
- b) AGTIV REACH® L POTATO + AGTIV STIMULATE® POTATO*.

*Products applied according to manufacturers recommended rate.

Experimental design:

- Latin square:
- 13 trials of 6 repetitions;
- 1 trial of 5 repetitions.

Table 1. **Average increase of marketable yield* in cwt/ac per trial**

Year	Sites	AGTIV REACH® L	AGTIV REACH® L and AGTIV STIMULATE®	Yield increase*
2021	Sainte-Croix	320.3	319.3	-1
2021	Saint-Marc	107.8	112.8	5
2021	New Glasgow	242.1	247.4	5.3
2021	Rockwood	279.7	322.3	42.6
2021	Elmira	320.7	343.9	23.2
2022	Saint-Marc	145.4	142.2	-3.2
2022	Newton	235.9	237.8	1.9
2022	Newton	92.5	109.3	16.8
2022	Rockwood	402.5	429	26.5
2023	New Glasgow	413.1	425.6	12.5
2023	Raymond	138.5	141.1	2.6
2023	Underhills Farm	361.8	360	-1.8
2023	Newton	282.4	291.2	8.8
2023	Newton	482.7	502.3	19.6
Average	14 sites	273.2	284.5	11.3 cwt/ac

*Comparison of the double inoculation vs AGTIV REACH® L POTATO

AGTIV REACH® COMPATIBILITY

Single action mycorrhizae products **REACH** into the soil and help uptake more nutrients and water.

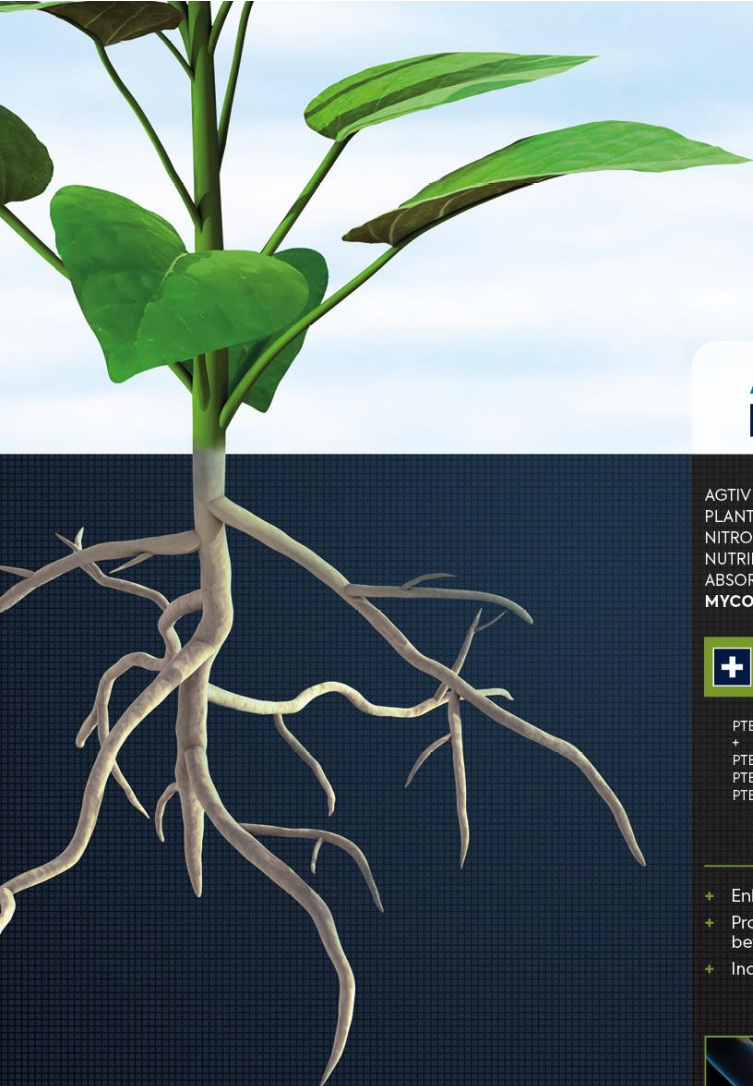
Mycorrhizal inoculant is compatible with most pesticides and liquid fertilizers.

[CLICK BELOW FOR ALL DETAILS](#)

PESTICIDES

**LIQUID
FERTILIZER
IN-FURROW**

**LIQUID
FERTILIZER
ON SEED**



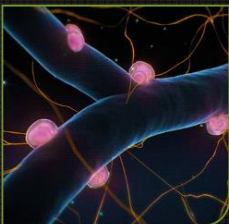
AGTIV[®] THRIVE.

AGTIV THRIVE[®] POWERS PLANTS BY BOOSTING NITROGEN FIXATION, NUTRIENT AND WATER ABSORPTION THANKS TO **MYCORRHIZAE & RHIZOBIUM**

+ MYCORRHIZAE + RHIZOBIUM

PTB297 Technology + PTB160 (pea & lentil) PTB162 (soybean) PTB161 (chickpea)

- + Enhances P uptake
- + Provides more energy for better nitrogen fixation
- + Increases photosynthesis



AGTIV[®] ENRICH.

AGTIV ENRICH[®] STRENGTHENS LEGUME NITROGEN FIXATION AND PROVIDES A VIGOROUS ROOT SYSTEM THANKS TO **RHIZOBIUM & BACILLUS**

+ RHIZOBIUM + BACILLUS

PTB162 Technology + PTB180 Technology

- + Increases nodulation and nitrogen fixation
- + Improves rooting environment
- + Enhances plant vigor and productivity



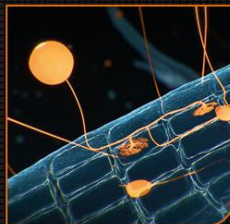
AGTIV[®] REACH.

AGTIV REACH[®] HELPS PLANTS REACH AND ABSORB MORE NUTRIENTS AND WATER THANKS TO **MYCORRHIZAE**

M MYCORRHIZAE

PTB297 Technology, *Rhizophagus irregularis* (formerly known as *Glomus intraradices*)

- + Expands root system
- + Enhances nutrient and water uptake
- + Promotes plant robustness and vigor



AGTIV[®] IGNITE.

AGTIV IGNITE[®] IMPROVES PHOTOSYNTHESIS AND MITIGATES IMPACT OF ENVIRONMENTAL STRESSES THANKS TO **SERENDIPITA**

S SERENDIPITA

PTB299 Technology, *Serendipita indica*

- + Mitigates abiotic stresses
- + Increases photosynthesis rate
- + Enhances plant establishment, growth and yield



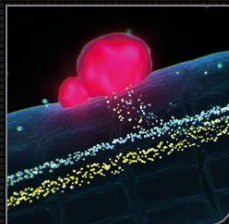
AGTIV[®] FUEL.

AGTIV FUEL[®] FEEDS LEGUMES BY FIXING ATMOSPHERIC NITROGEN THANKS TO **RHIZOBIUM**

R RHIZOBIUM

PTB160 Technology (pea & lentil) *Rhizobium leguminosarum biovar viciae* PTB162 Technology (soybean) *Bradyrhizobium japonicum* PTB161 Technology (chickpea) *Mesorhizobium ciceri*

- + Increases nodulation
- + Fixes nitrogen
- + Provides nutrients to pulses



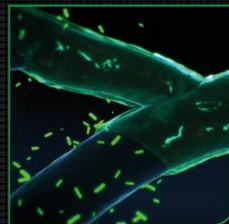
AGTIV[®] STIMULATE.

AGTIV STIMULATE[®] REINFORCES PLANTS WITH A HEALTHY ROOT ZONE THANKS TO **BACILLUS**

B BACILLUS

PTB180 Technology, *Bacillus pumilus* PTB185 Technology, *Bacillus inaquosorum*

- + Stimulates rooting environment
- + Improves plant establishment
- + Increases plant vigor and productivity



Learn more at

[PTAGTIV.COM/en/technologies](https://ptagtiv.com/en/technologies)

CLICK ON A PICTURE TO SEE THE TECHNOLOGY IN ACTION

Since entering the agriculture market 15 years ago, we are constantly widening our AGTIV® inoculant offering to suit and benefit more crops.

While staying true to the AGTIV® brand's three pillars:

NATURE, SCIENCE and **PERFORMANCE**, we are introducing new product names reflecting the actions of our inoculants for plants.

AGTIV® FUEL
Single action **rhizobium** products FUEL legumes by fixing nitrogen for better growth.

AGTIV® THRIVE
Dual action **mycorrhizae** and **rhizobium** products make plants THRIVE by increasing nutrient uptake.

AGTIV® ENRICH
Dual action **rhizobium** and **Bacillus** collaborate to ENRICH the plant's nitrogen fixation with a healthy root system.

AGTIV® STIMULATE
Single action **Bacillus** products STIMULATE the plant to grow more efficiently with a healthy root zone.

AGTIV® IGNITE
Single action **Serendipita** products IGNITE plant growth and chlorophyll content for better yields.

AGTIV® REACH
Single action **mycorrhizae** products REACH into the soil and help uptake more nutrients and water.

AGTIV®

**DESIGNED BY NATURE.
PERFECTED BY SCIENCE.**

Born from **nature** and perfected by **science**, AGTIV® is an innovative technology brand made of high-quality and proven natural active ingredients that deliver superior **performance** for agricultural producers.

Discover more at

PTAGTIV.COM/brand

ONLINE TOOLS



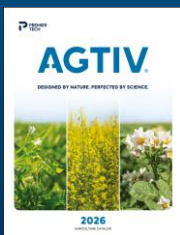
LABELS



EFFICACY REPORT



APPLICATION VIDEOS



BROCHURES



SOCIAL MEDIA

AND MUCH MORE

[Safety data sheets](#), [organic certificates](#)

