



# AGTIV<sup>®</sup>

## SOYBEAN GUIDE 2026

Yield details available upon request.



# AGTIV®

DESIGNED BY NATURE. PERFECTED BY SCIENCE.



## CONTENTS

### PRODUCT OFFER

- [BENEFITS FOR SOYBEAN](#)
- [EFFECTIVE ON SOYBEAN](#)
- [PRODUCTS INFORMATION](#)
- [COMPLEMENTARY EQUIPMENT](#)

### REPORTS SUMMARY

- [YIELD RESULTS](#)
- [COMPATIBILITY WITH PESTICIDES AND FERTILIZERS](#)

### AGTIV®

- [OUR TECHNOLOGIES](#)
- [OUR PRODUCTS](#)

### TOOLS

- [ONLINE TOOLS](#)

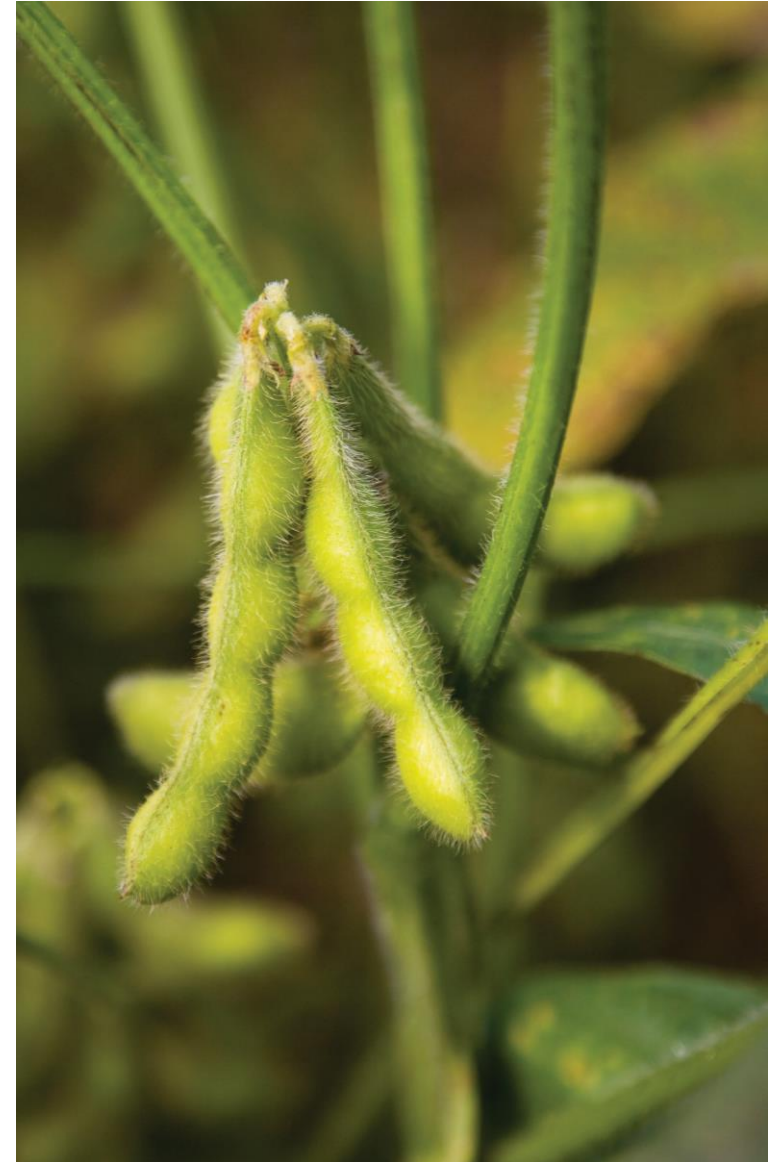
# BENEFITS FOR SOYBEAN

**AGTIV FUEL®** brings the **power of nitrogen** to the plant for **faster** and **stronger growth**.

**AGTIV FUEL®** gives the plant the push it needs to achieve its **potential**.

**AGTIV THRIVE®** helps plants flourish by improving the fixation and **uptake** of **nitrogen, nutrients** and **water**, while **protecting** against stressors like drought and soil compaction. **AGTIV THRIVE®** contributes to better growth, thus increasing crop **yield** and **quality**.

**AGTIV ENRICH®** helps plants uptake **more nitrogen** for **stronger growth**. The result: **healthier plants** with more **consistent yields**.





# EFFECTIVE ON SOYBEAN

# AGTIV<sup>®</sup>

Ontario (Canada)



Ontario (Canada)



Ontario (Canada)



Quebec (Canada)





# AGTIV FUEL®

# AGTIV®



SOYBEAN

AGTIV FUEL® G SOYBEAN							
F: Granules (peat) S: 18.2 kg (40 lb) bag – 364 kg (800 lb) tote bag C: Soybean: Bag: 4 ha (10 acres) – Tote bag: 80 ha (200 acres)	R	✓	●				
AGTIV FUEL® L SOYBEAN *							
F: Liquid S: 8 L (8 kg) bag-in-box C: Soybean: 16 ha (40 acres) or 5680 kg of seeds (250 units)	R	✓			●	●	



## GRANULAR IN-FURROW

### AGTIV FUEL® G SOYBEAN



#### ACTIVE INGREDIENT:

**R** RHIZOBIUM – PTB162 Technology  
*Bradyrhizobium japonicum*: 1.1 x 10<sup>8</sup> viable cells/g

#### INERT INGREDIENT:

Peat

**PARTICLE SIZE:** 0.5 mm to 2.5 mm (8 - 30 mesh)

**BULK DENSITY:** 600 g/L (37.4 lb/ft<sup>3</sup>)

SIZE	COVERS	CODE
18.2 kg (40 lb) – bag	4 ha (10 acres)	710511
364 kg (800 lb) – tote bag	80 ha (200 acres)	710512

#### DIRECTIONS FOR USE

Apply in the seed row at a rate of 4.5 kg/ha (4 lb/acre).

**COVERS  
10/200  
acres**

## LIQUID FOR IN-FURROW OR ON SEED

### AGTIV FUEL® L SOYBEAN



#### ACTIVE INGREDIENT:

**R** RHIZOBIUM – PTB162 Technology  
*Bradyrhizobium japonicum*: 8 x 10<sup>8</sup> viable cells/g

**PARTICLE SIZE:** < 0.1 mm (150 mesh)

Contains non-soluble particles

**TREATS  
250  
units**

SIZE	COVERS	CODE
8 L (8 kg) – bag-in-box	In-furrow: 16 ha (40 acres) On seed: 5680 kg of seeds (250 units)	710604

#### DIRECTIONS FOR USE

**ON SEED** — Shake well before use and apply directly to the seed. Apply 64 ml per 45.5 kg of seeds, ensure full coverage. Optimum on-seed viability for 30 days when treated seeds are stored below 12°C (54°F).

**IN-FURROW** — Apply directly in the seed row at a rate of 500 ml/ha (200 ml/acre). This product should be applied using the AGTIV® Liquid Injection Kit. To apply, prepare the product mixture and adjust the Dosatron® injection rate following the application chart and video at [PTAGTIV.COM/en/liquid-injection-kit](http://PTAGTIV.COM/en/liquid-injection-kit).

★ Use EXTENDER™ L for AGTIV® inoculants for longer shelf life.



# AGTIV ENRICH®

AGTIV®



SOYBEAN

## AGTIV ENRICH® SOYBEAN \*

F: Liquid  
S: Combo box: 8 L (8 kg) (*Bradyrhizobium*) bag-in-box + 300 ml (*Bacillus*) bottle  
C: Soybean: 16 ha (40 acres) or 5680 kg of seeds (250 units)

ACTIVE INGREDIENT(S)	ORGANIC	APPLICATION MODE				FORMULATION
		GRANULAR IN-FURROW	MIXING WITH SEEDS	LIQUID IN-FURROW	LIQUID ON SEED	
R B	✓			●	●	●



# AGTIV ENRICH®

# AGTIV®



COMBO LIQUID FOR IN-FURROW OR ON SEED

## AGTIV ENRICH® SOYBEAN



### ACTIVE INGREDIENTS:

- B** BACILLUS – PTB180 Technology  
*Bacillus pumilus*: 3 x 10<sup>9</sup> viable spores/g
- R** RHIZOBIUM – PTB162 Technology  
*Bradyrhizobium japonicum*: 8 x 10<sup>9</sup> viable cells/g

TREATS  
250  
units

**PARTICLE SIZE:** < 0.1 mm (150 mesh)  
Contains non-soluble particles

SIZE	COVERS	CODE
Combo box: 8 L (8 kg) – bag-in-box 300 ml – bottle	In-furrow: 16 ha (40 acres) On seed: 5680 kg of seeds (250 units)	710814

### DIRECTIONS FOR USE

**ON SEED** — Mix the bladder of *Bradyrhizobium* and the bottle of *Bacillus* in the application tank. Apply at a rate of 66.4 ml/45.5 kg of seeds. Agitate constantly during application to keep bacteria in suspension. Optimum on-seed viability for 30 days when treated seeds are stored below 12°C (54°F).

**IN-FURROW** — Mix the content of the bladder and the bottle in the mix tank. Dilute the inoculants in the required volume of clean, non-chlorinated water according to the product label. Apply in the furrow, directly on the seed, at a rate of 518.75 ml/ha (207.5 ml/acre).

★ Use EXTENDER™ L for AGTIV® inoculants for longer shelf life.



# EXTENDER™ L FOR AGTIV®

AGTIV®



## LIQUID ADDITIVE FOR SEED APPLICATION

EXTENDER™ L for AGTIV® inoculants is a liquid additive designed for on seed application of AGTIV® inoculants, in order to prevent desiccation.

### DIRECTIONS FOR USE

A bag of EXTENDER™ L for AGTIV® inoculants can treat up to 250 units of soybean or 240 bushels of pulses. Apply to seeds at a rate of 12.8 ml / 45 kg of seeds for soybean and 6.6 ml / 27 kg of seeds for pulses.

### RECOMMENDATIONS

- Open package only when ready to use.
- Shake well before use and maintain a constant and effective agitation in the tank during application.
- Calibrate the application system to deliver the correct amount of mixture of AGTIV® inoculant and EXTENDER™ L for AGTIV® inoculants.
- Ensure the tank and the liquid application system are clean and free of chemical residues.
- Ensure the temperature of the diluted tank mix does not exceed 22°C (72°F).
- Prepare only as much of mixture as will be used that day.
- Ensure full seed coverage.
- Apply within 6 hours following mix into the tank.
- Respect the best before date on the label.

# AGTIV THRIVE®

# AGTIV®



SOYBEAN

AGTIV THRIVE® P SOYBEAN

F: Powder (peat)

S: 4.7 kg (10.3 lb) pail

C: Soybean: 16 ha (40 acres)

M

R

✓

●

AGTIV THRIVE® G SOYBEAN

F: Granules (peat)

S: 18.2 kg (40 lb) bag – 364 kg (800 lb) tote bag

C: Soybean: Bag: 4 ha (10 acres) – Tote bag: 80 ha (200 acres)

M

R

✓

●

AGTIV THRIVE® SOYBEAN

F: Liquid

S: Combo box: 8 L (8 kg) bag-in-box + 2 x 950 ml (2 x 32 fl. oz) bottles

C: Soybean: 16 ha (40 acres)

M

R

✓

●



# AGTIV THRIVE®

## ON-FARM MIXING WITH SEEDS

### AGTIV THRIVE® P SOYBEAN



#### ACTIVE INGREDIENTS:

- M** MYCORRHIZAE – PTB297 Technology  
*Rhizophagus irregularis*: 2 750 viable spores/g
- R** RHIZOBIUM – PTB162 Technology  
*Bradyrhizobium japonicum*: 2.5 x 10<sup>9</sup> active cells/g

**COVERS  
40  
acres**

#### INERT INGREDIENT: Peat

**PARTICLE SIZE:** < 1 mm (18 mesh)

**BULK DENSITY:** 400 g/L (1 lb/US dry qt)

SIZE	COVERS	CODE
4.7 kg (10.3 lb) – pail	16 ha (40 acres)	710703

#### DIRECTIONS FOR USE

**DRY APPLICATION** — Mix evenly with seeds at the bottom of the grain auger while filling drill, or directly in the drill box. Ensure uniform seed coverage is obtained. Apply at 300 g/ha (120 g or 4.2 oz/acre).

**SLURRY APPLICATION** — Pour one 4.7 kg pail in a clean container. Gradually add 8–10 litres of clean, non-chlorinated water and stir well. Add more water if the slurry is too thick. Pour onto the seeds and mix thoroughly to ensure even coating.

## GRANULAR IN-FURROW

### AGTIV THRIVE® G SOYBEAN



#### ACTIVE INGREDIENTS:

- M** MYCORRHIZAE – PTB297 Technology  
*Rhizophagus irregularis*: 178 viable spores/g
- R** RHIZOBIUM – PTB162 Technology  
*Bradyrhizobium japonicum*: 1.1 x 10<sup>8</sup> viable cells/g

**COVERS  
10/200  
acres**

#### INERT INGREDIENT: Peat

**PARTICLE SIZE:** 0.5 mm to 2.5 mm (8–30 mesh)

**BULK DENSITY:** 600 g/L (37.4 lb/ft<sup>3</sup>)

SIZE	COVERS	CODE
18.2 kg (40 lb) – bag	4 ha (10 acres)	710501
364 kg (800 lb) – tote bag	80 ha (200 acres)	710502

#### DIRECTIONS FOR USE

Apply in the seed row at a rate of 4.5 kg/ha (4 lb/acre).

# AGTIV

## COMBO LIQUID FOR IN-FURROW

### AGTIV THRIVE® SOYBEAN



#### ACTIVE INGREDIENTS:

- M** MYCORRHIZAE – PTB297 Technology  
*Rhizophagus irregularis*: 6400 viable spores/g
- R** RHIZOBIUM – PTB162 Technology  
*Bradyrhizobium japonicum*: 8 x 10<sup>9</sup> viable cells/g

**COVERS  
40  
acres**

#### INERT INGREDIENT: Water

**PARTICLE SIZE:** < 0.2 mm (70 mesh) – PTB297 Technology

< 0.1 mm (150 mesh) – PTB162 Technology

Contains non-soluble particles

SIZE	COVERS	CODE
Combo box: 2 x 950 ml (2 x 32 fl. oz) – bottles 8 L (8 kg) – bag-in-box	16 ha (40 acres)	710614

#### DIRECTIONS FOR USE

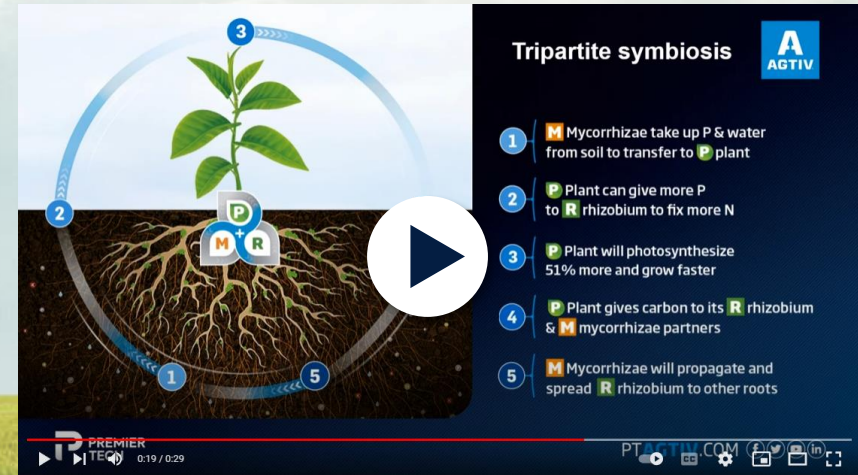
This product should be applied using the AGTIV® Liquid Injection Kit. To apply, pour 2 x 950 ml bottles of Mycorrhizae and one 8 L bladder of Rhizobium in the tank and adjust the Dosatron® injection rate following the application chart and video at [PTAGTIV.COM/en/liquid-injection-kit](https://PTAGTIV.COM/en/liquid-injection-kit).

Apply directly in the seed row at a rate of 118.75 ml/ha (47.5 ml/acre) for Mycorrhizae and 500 ml/ha (200 ml/acre) for Rhizobium, for a total of 618.75 ml/ha (247.5 ml/acre). If the mixture does not contain pesticides or fertilizers, it can be emptied, refrigerated and used within 24 hours.





# TRIPARTITE SYMBIOSIS



EXPLAINED BY OUR EXPERTS

# PROGRAM

## AGTIV<sup>®</sup> LIQUID INJECTION KIT

AGTIV<sup>®</sup>

- The AGTIV<sup>®</sup> Liquid Injection Kit is designed to apply the AGTIV<sup>®</sup> liquid products.
- The kit must be installed on the existing in-furrow liquid system of the planter as shown in the application videos.
- The mycorrhizae must be injected directly in the furrow close to the seeds.
- **GOAL:** To facilitate the use and application of the AGTIV<sup>®</sup> with maximum accuracy and without affecting the mycorrhizae spores and in-furrow equipment.



# YIELD RESULTS

**AGTIV**<sup>®</sup>



## SOYBEAN



**3.3** bu/ac  
6.7%

**AGTIV<sup>®</sup> THRIVE<sup>™</sup> SOYBEAN**  
91 sites over 11 years, Canada and Europe

**1.8** bu/ac  
3.2%

**AGTIV<sup>®</sup> ENRICH<sup>™</sup> SOYBEAN**  
9 third-party trials over 4 years, Canada



[CLICK HERE FOR DETAILS](#)



# PESTICIDES AND FERTILIZERS COMPATIBILITY

Single action rhizobium products **FUEL** legumes by fixing nitrogen for better growth.

Dual action mycorrhizae and rhizobium products make plants **THRIVE** by increasing nutrient uptake.

Dual action rhizobium and Bacillus collaborate to **ENRICH** the plant's nitrogen fixation with a healthy root system.

Our inoculants are compatible with most pesticides and liquid fertilizers.

## Mycorrhizae

PESTICIDES

LIQUID FERTILIZER  
IN-FURROW

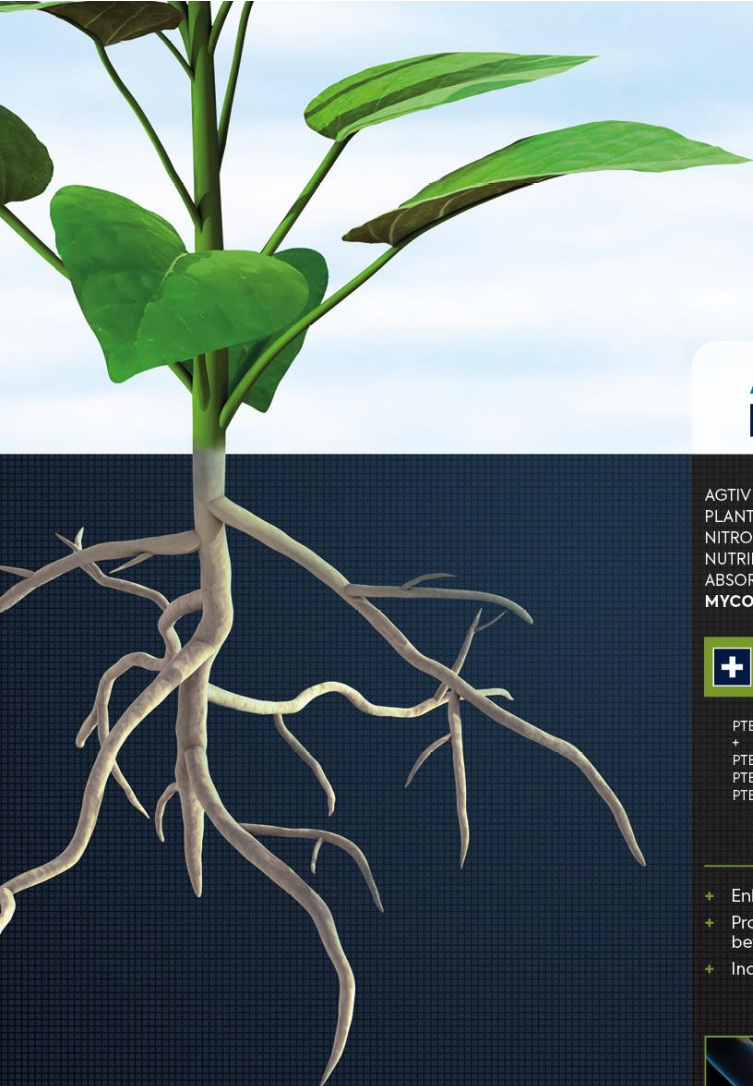
LIQUID FERTILIZER  
ON SEED

## Rhizobium

PESTICIDES

LIQUID FERTILIZER  
IN-FURROW





## AGTIV<sup>®</sup> THRIVE.

AGTIV THRIVE<sup>®</sup> POWERS PLANTS BY BOOSTING NITROGEN FIXATION, NUTRIENT AND WATER ABSORPTION THANKS TO **MYCORRHIZAE & RHIZOBIUM**

### **+** MYCORRHIZAE + RHIZOBIUM

PTB297 Technology + PTB160 (pea & lentil) PTB162 (soybean) PTB161 (chickpea)

- + Enhances P uptake
- + Provides more energy for better nitrogen fixation
- + Increases photosynthesis



## AGTIV<sup>®</sup> ENRICH.

AGTIV ENRICH<sup>®</sup> STRENGTHENS LEGUME NITROGEN FIXATION AND PROVIDES A VIGOROUS ROOT SYSTEM THANKS TO **RHIZOBIUM & BACILLUS**

### **+** RHIZOBIUM + BACILLUS

PTB162 Technology + PTB180 Technology

- + Increases nodulation and nitrogen fixation
- + Improves rooting environment
- + Enhances plant vigor and productivity



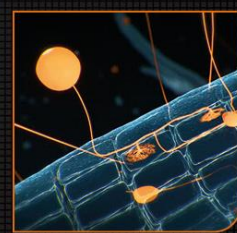
## AGTIV<sup>®</sup> REACH.

AGTIV REACH<sup>®</sup> HELPS PLANTS REACH AND ABSORB MORE NUTRIENTS AND WATER THANKS TO **MYCORRHIZAE**

### **M** MYCORRHIZAE

PTB297 Technology, *Rhizophagus irregularis* (formerly known as *Glomus intraradices*)

- + Expands root system
- + Enhances nutrient and water uptake
- + Promotes plant robustness and vigor



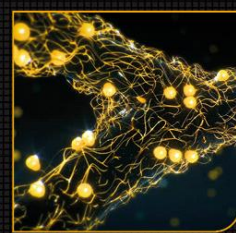
## AGTIV<sup>®</sup> IGNITE.

AGTIV IGNITE<sup>®</sup> IMPROVES PHOTOSYNTHESIS AND MITIGATES IMPACT OF ENVIRONMENTAL STRESSES THANKS TO **SERENDIPITA**

### **S** SERENDIPITA

PTB299 Technology, *Serendipita indica*

- + Mitigates abiotic stresses
- + Increases photosynthesis rate
- + Enhances plant establishment, growth and yield



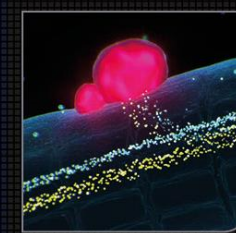
## AGTIV<sup>®</sup> FUEL.

AGTIV FUEL<sup>®</sup> FEEDS LEGUMES BY FIXING ATMOSPHERIC NITROGEN THANKS TO **RHIZOBIUM**

### **R** RHIZOBIUM

PTB160 Technology (pea & lentil) *Rhizobium leguminosarum biovar viciae* PTB162 Technology (soybean) *Bradyrhizobium japonicum* PTB161 Technology (chickpea) *Mesorhizobium ciceri*

- + Increases nodulation
- + Fixes nitrogen
- + Provides nutrients to pulses



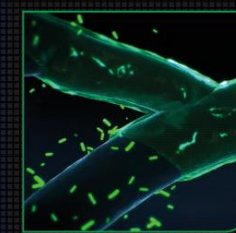
## AGTIV<sup>®</sup> STIMULATE.

AGTIV STIMULATE<sup>®</sup> REINFORCES PLANTS WITH A HEALTHY ROOT ZONE THANKS TO **BACILLUS**

### **B** BACILLUS

PTB180 Technology, *Bacillus pumilus* PTB185 Technology, *Bacillus inaquosorum*

- + Stimulates rooting environment
- + Improves plant establishment
- + Increases plant vigor and productivity



Learn more at

[PTAGTIV.COM/en/technologies](https://ptagtiv.com/en/technologies)

CLICK ON A PICTURE TO SEE THE TECHNOLOGY IN ACTION

Since entering the agriculture market 15 years ago, we are constantly widening our AGTIV® inoculant offering to suit and benefit more crops.

While staying true to the AGTIV® brand's three pillars:

**NATURE**, **SCIENCE** and **PERFORMANCE**, we are introducing new product names reflecting the actions of our inoculants for plants.

**AGTIV® FUEL**  
Single action **rhizobium** products  
FUEL legumes by fixing nitrogen  
for better growth.

**AGTIV® ENRICH**  
Dual action **rhizobium**  
and **Bacillus** collaborate  
to ENRICH the plant's  
nitrogen fixation with a  
healthy root system.

**AGTIV® IGNITE**  
Single action **Serendipita** products  
IGNITE plant growth and chlorophyll  
content for better yields.

**AGTIV® THRIVE**  
Dual action **mycorrhizae** and  
**rhizobium** products make plants  
THRIVE by increasing nutrient uptake.

**AGTIV® STIMULATE**  
Single action **Bacillus** products  
STIMULATE the plant to grow more  
efficiently with a healthy root zone.

**AGTIV® REACH**  
Single action **mycorrhizae** products  
REACH into the soil and help uptake  
more nutrients and water.

# AGTIV®

**DESIGNED BY NATURE.  
PERFECTED BY SCIENCE.**

Born from **nature** and  
perfected by **science**,  
AGTIV® is an innovative  
technology brand  
made of high-quality  
and proven natural  
active ingredients  
that deliver superior  
**performance** for  
agricultural producers.

Discover more at

[PTAGTIV.COM/brand](https://PTAGTIV.COM/brand)



# ONLINE TOOLS



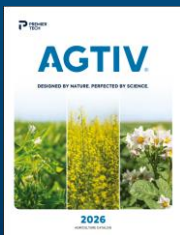
**LABELS**



**EFFICACY REPORT**



**APPLICATION VIDEOS**



**BROCHURES**



**SOCIAL MEDIA**

**AND MUCH MORE**

[Safety data sheets](#), [organic certificates](#)

