



# AGTIV<sup>®</sup>

**POTATO** US GUIDE 2026

# AGTIV<sup>®</sup>

DESIGNED BY NATURE. PERFECTED BY SCIENCE.



## CONTENTS

### PRODUCT OFFER

- [BENEFITS FOR POTATO](#)
- [EFFECTIVE ON POTATO](#)
- [PRODUCT INFORMATION](#)
- [RULES TO SUCCESS](#)
- [COMPLEMENTARY EQUIPMENT](#)

### REPORTS SUMMARY

- [YIELD RESULTS](#)
- [COMPATIBILITY WITH PESTICIDES AND FERTILIZERS](#)

### AGTIV<sup>®</sup>

- [OUR TECHNOLOGIES](#)
- [OUR PRODUCTS](#)

### TOOLS

- [ONLINE TOOLS](#)



# BENEFITS FOR POTATO

**AGTIV® REACH™** creates the expansion of the root network by hyphae to reach further and uptake more nutrients and water, increasing resistance to stresses.

**AGTIV® REACH™** ensures your plants are **stronger, healthier** and **more vigorous**.





# EFFECTIVE ON POTATO



Quebec (Canada)



Ontario (Canada)



Quebec (Canada)



Quebec (Canada)



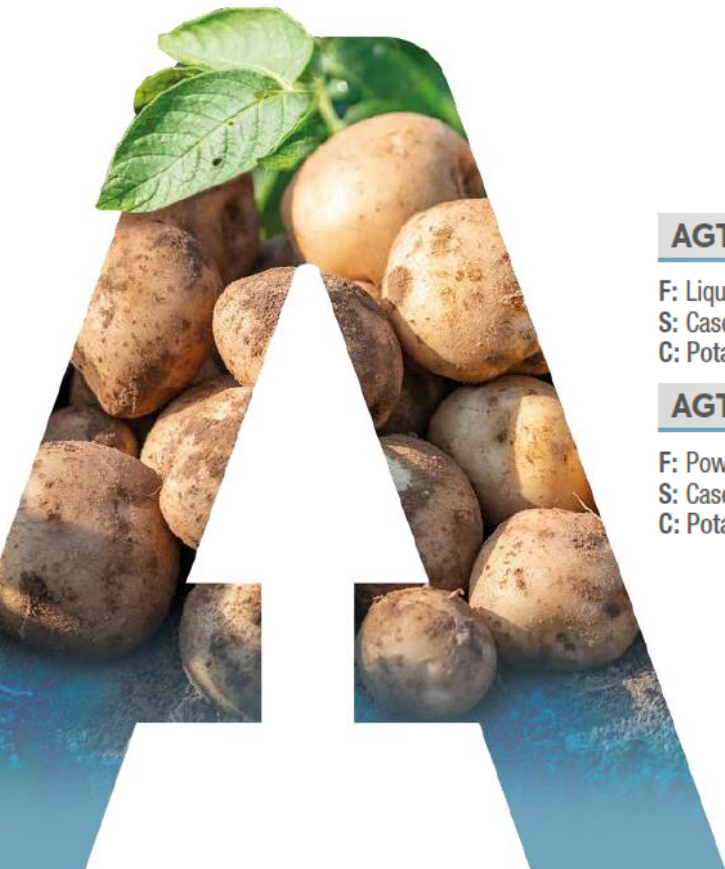
Pays de la Loire (France)



Artois (France)



# AGTIV® REACH™



ACTIVE INGREDIENT(S)	ORGANIC	APPLICATION MODE				FORMULATION
		GRANULAR IN-FURROW	MIXING WITH SEEDS	LIQUID IN-FURROW	LIQUID ON SEED	

## AGTIV® REACH™ L POTATO

F: Liquid (spores in suspension)  
S: Case of 2 x 950 ml (2 x 32 fl. oz) bottles  
C: Potato: 8 ha (20 acres) per case

M



## AGTIV® REACH™ P POTATO

F: Powder  
S: Case of 2 x 300 g (2 x 10.5 oz) bag  
C: Potato: 16 ha (40 acres) per case

M



# AGTIV® REACH™

IN-FURROW APPLICATION OR SEED-PIECE TREATMENT

## AGTIV® REACH™ L POTATO



ACTIVE INGREDIENT:

**M** MYCORRHIZAE – PTB297 Technology  
*Rhizophagus irregularis*: 10 500 viable spores/g

INERT INGREDIENT: Water

PARTICLE SIZE: < 0.2 mm (70 mesh)

Contains non-soluble particles

SIZE	COVERS (1 case)	CODE (case)
2 x 950 ml (2 x 32 fl. oz) – bottles	8 ha (20 acres)	711004

### DIRECTIONS FOR USE

**IN-FURROW APPLICATION** — Dilute the product in the required volume of clean, non-chlorinated water. Refer to the application charts available at [PTAGTIV.COM/en/potato](http://PTAGTIV.COM/en/potato). **Shake the bottle well before use and maintain a constant agitation in the tank during application to avoid settling and clogging.** Apply directly on seed pieces into furrow.

**SEED-PIECE TREATMENT** — In a clean tank, pour the content of one 950 ml (32 fl. oz) bottle in the volume of liquid required to treat the amount of seed pieces for 4 hectares (10 acres) of seedbed (110 000 – 170 000 seed pieces). **Shake the bottle well before use and maintain a constant agitation in the tank during application to avoid settling and clogging.** Apply directly on seed pieces. Do not treat seed pieces more than 48 hours before seeding (could activate seed-piece sprouting).

**COVERS  
20  
acres**

IN-FURROW APPLICATION OR SEED-PIECE TREATMENT

## AGTIV® REACH™ P POTATO



ACTIVE INGREDIENT:

**M** MYCORRHIZAE – PTB297 Technology  
*Rhizophagus irregularis*: 67 000 viable spores/g

INERT INGREDIENT: Diatomaceous earth

PARTICLE SIZE: < 0.2 mm (70 mesh)

SIZE	COVERS	CODE (case)
2 x 300 g (2 x 10.5 oz) – pouches	16 ha (40 acres)	711104

### DIRECTIONS FOR USE

Pour the content of a 300 g pouch into 5.7 liters of clean and non-chlorinated water. **Mix well and maintain under agitation during application.** Apply directly on seed pieces into furrow.

**COVERS  
40  
acres**

# RECOMMENDATIONS

## IN-FURROW APPLICATION

### RECOMMENDATIONS

#### LIQUID INJECTION:

The AGTIV® Liquid Injection Kit, integrating a Dosatron® pump, is a customized equipment designed for the precise application of AGTIV® liquid products. Easy to install on your existing in-furrow application system, it operates off the main solution flow.

- Ensure the tank and the liquid injection system are clean and free of chemical residues, and agitation system is operational.
- On the planter, remove all cylinder screens by the nozzles or use filters with openings of at least 50 mesh (0.28 mm).
- Prepare your product mixture and adjust the Dosatron® injection rate following the calculation chart and application video at [PTAGTIV.COM/en/liquid-injection-kit](https://PTAGTIV.COM/en/liquid-injection-kit).
- Spray band width should be limited to 7 in (18 cm) or less.
- If the mixture does not contain pesticides or fertilizers, it can be emptied, refrigerated and used within 24 hours.

#### TANK MIX:

- Use filters with openings of at least 50 mesh (0.28 mm).
- Use a diaphragm (or peristaltic) pump for product application.
- Up and down agitation at all times in the tank.
- Spray band width should be limited to 7 in (18 cm) or less.
- Apply within 6 hours after mixing into the liquid tank.
- See the application video at [PTAGTIV.COM/en/potato](https://PTAGTIV.COM/en/potato).

## SEED-PIECE TREATMENT

### RECOMMENDATIONS

#### MILESTONE TREATER:

- Validate that the atomizing head and the mixing paddles correspond to the approved specifications.  
Visit [PTAGTIV.COM/en/equipment](https://PTAGTIV.COM/en/equipment) for more details or contact your representative.

#### OTHER MODELS:

- Validate that the atomizing head and the mixing paddles correspond to the approved specifications (ask your representative for more info).
- Use filters with openings of at least 50 mesh (0.28 mm).
- Use a diaphragm (or peristaltic) pump for product application.
- Up and down agitation at all times in the tank.

# 8 RULES TO SUCCESS

# AGTIV<sup>®</sup>



-  Product must be refrigerated (2-8 °C, 36-46 °F). Store the product at constant temperature at all times. Do not freeze product.
-  Use filters with openings of at least 0.28 mm (50 mesh).
-  Use diaphragm pump for product application (or peristaltic pump).
-  Shake the bottle well before use and maintain a constant and effective agitation in the tank during application.
-  Band width should be limited to 7 in (18 cm) or less.
-  Do not treat seed pieces more than 48 hours before seeding.
-  Apply within 6 hours after mixing into the liquid tank.
-  Do not use after the best before date indicated on the label.



# PROGRAM

AGTIV®

## AGTIV® LIQUID INJECTION KIT

- The AGTIV® Liquid Injection Kit is designed to apply the AGTIV® liquid products.
- The kit must be installed on the existing in-furrow liquid system of the planter as shown in the application videos.
- The mycorrhizae must be injected directly in the furrow close to the seeds.
- **GOAL:** To facilitate the use and application of the AGTIV® with maximum accuracy and without affecting the mycorrhizae spores and in-furrow equipment.



# POTATO YIELD RESULTS

**AGTIV**<sup>®</sup>



**POTATO**

**31.6** <sup>cwt/ac</sup>  
**9.2%**

**AGTIV<sup>®</sup> REACH<sup>™</sup> POTATO**  
1199 sites over 14 years,  
North America and Europe

**CLICK HERE FOR DETAILS**





# EFFICACY REPORT

## SUMMARY - MYCORRHIZAL INOCULANT

### ► GROWER SPLIT FIELDS AND TRIALS

#### Research sites:

- Belgium;
- Canada;
- France;
- Germany;
- Mexico;
- Switzerland;
- United States.

#### Treatments:

- Untreated;
- AGTIV® REACH™ L POTATO\*.

\*Products applied according to manufacturers recommended rate.

#### Experimental design:

1197 split fields

Table 1. Average increase of marketable yield\* with AGTIV® REACH™ L POTATO

Territory	Number of sites	Yield increase (t/ha)	Yield increase (cwt/ac)	Yield increase (%)
<b>Canada</b>	598	3.1	27.6	9.9
<b>United States</b>	67	3.3	29.8	10.8
<b>Mexico</b>	4	2.3	20.0	8.6
<b>Belgium, France &amp; Switzerland</b>	496	4.1	36.3	9.9
<b>Germany</b>	32	4.2	37.4	10.0
<b>Total</b>	<b>1197 sites</b>	<b>3.5 t/ha*</b>	<b>31.6 cwt/ac**</b>	<b>9.1%</b>

Table 2. Average increase of marketable yield\* with AGTIV® REACH™ L POTATO

Year	Number of sites	Yield increase (t/ha)	Yield increase (cwt/ac)	Yield increase (%)
<b>2011</b>	32	2.6	23.3	6.6
<b>2012</b>	33	3.2	28.5	9.0
<b>2013</b>	70	3.6	31.9	11.2
<b>2014</b>	116	4.5	40.3	12.8
<b>2015</b>	145	4.0	35.3	10.7
<b>2016</b>	243	3.9	34.8	10.5
<b>2017</b>	213	2.7	24.0	7.7
<b>2018</b>	113	3.4	30.2	11.2
<b>2019</b>	117	3.5	31.1	8.6
<b>2020</b>	49	2.9	25.6	9.8
<b>2021</b>	41	4.1	36.4	10.2
<b>2022</b>	12	3.4	29.2	7.8
<b>2023</b>	13	2.7	23.9	8
<b>Total</b>	<b>1197 sites</b>	<b>3.5 t/ha*</b>	<b>31.6 cwt/ac**</b>	<b>9.1%</b>

\* Statistically significant at p<0.001 following a T test.

\*\*cwt/ac = 100 lb/ac

# AGTIV® REACH™ COMPATIBILITY

Single action mycorrhizae products **REACH** into the soil and help uptake more nutrients and water.

Mycorrhizal inoculant is compatible with most pesticides and liquid fertilizers.

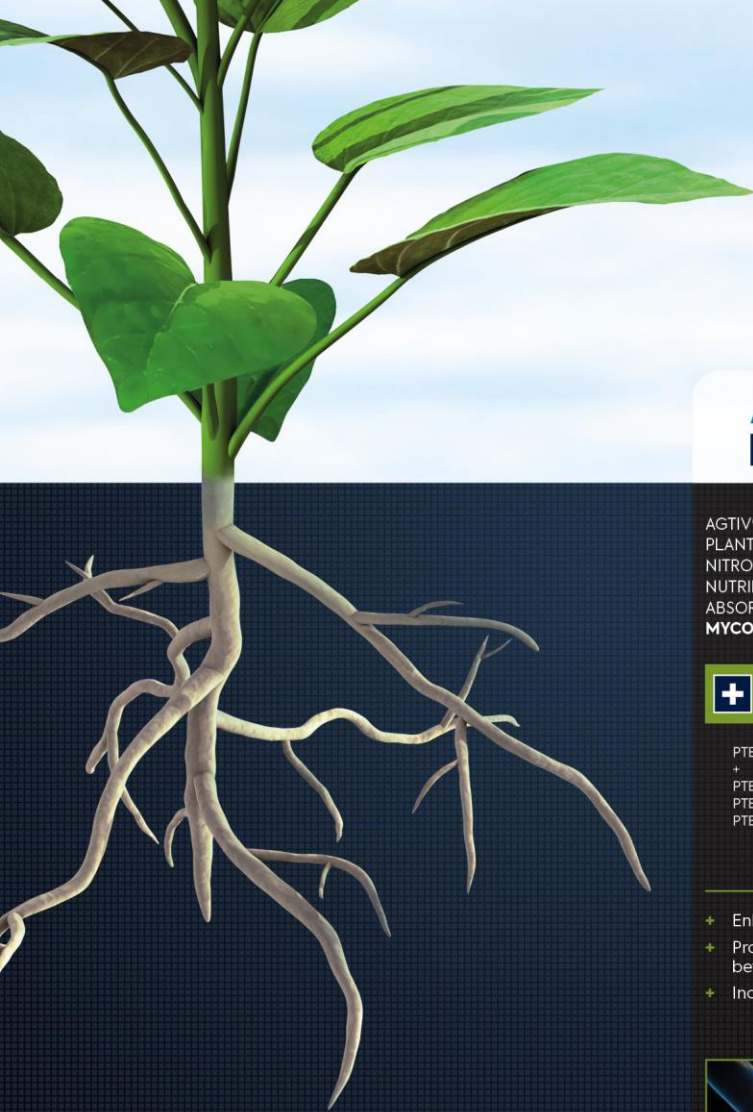
[CLICK BELOW FOR ALL DETAILS](#)

**PESTICIDES**

**LIQUID  
FERTILIZER  
IN-FURROW**

**LIQUID  
FERTILIZER  
ON SEED**





## BIOLOGICAL ACTIVE INGREDIENTS

For more than 100 years, Premier Tech has been growing along with producers. Being a world leader in the industrial production of mycorrhizal inoculants has inspired us to go further in our search for natural technologies. Since then, we have introduced the benefits of *Bacillus*, rhizobium, and *Serendipita* to the agricultural market. Furthermore, we have combined these powerful technologies to improve the quality and the yield of crops for the benefit of our clients.

### AGTIV. THRIVE

AGTIV® THRIVE™ POWERS PLANTS BY BOOSTING NITROGEN FIXATION, NUTRIENT AND WATER ABSORPTION THANKS TO **MYCORRHIZAE & RHIZOBIUM**

#### **+** MYCORRHIZAE + RHIZOBIUM

PTB297 Technology  
+  
PTB160 (pea & lentil)  
PTB162 (soybean)  
PTB161 (chickpea)

- + Enhances P uptake
- + Provides more energy for better nitrogen fixation
- + Increases photosynthesis



### AGTIV. ENRICH

AGTIV® ENRICH™ STRENGTHENS LEGUME NITROGEN FIXATION AND PROVIDES A VIGOROUS ROOT SYSTEM THANKS TO **RHIZOBIUM & BACILLUS**

#### **+** RHIZOBIUM + BACILLUS

PTB162 Technology  
+  
PTB180 Technology

- + Increases nodulation and nitrogen fixation
- + Improves rooting environment
- + Enhances plant vigor and productivity



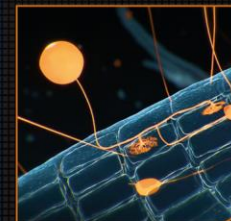
### AGTIV. REACH

AGTIV® REACH™ HELPS PLANTS REACH AND ABSORB MORE NUTRIENTS AND WATER THANKS TO **MYCORRHIZAE**

#### **M** MYCORRHIZAE

PTB297 Technology,  
*Rhizophagus irregularis*  
(formerly known as  
*Glomus intraradices*)

- + Expands root system
- + Enhances nutrient and water uptake
- + Promotes plant robustness and vigor



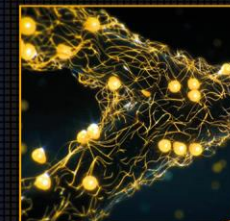
### AGTIV. IGNITE

AGTIV® IGNITE™ IMPROVES PHOTOSYNTHESIS AND MITIGATES IMPACT OF ENVIRONMENTAL STRESSES THANKS TO **SERENDIPITA**

#### **S** SERENDIPITA

PTB299 Technology,  
*Serendipita indica*

- + Mitigates abiotic stresses
- + Increases photosynthesis rate
- + Enhances plant establishment, growth and yield



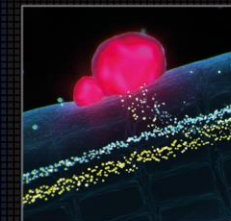
### AGTIV. FUEL

AGTIV® FUEL™ FEEDS LEGUMES BY FIXING ATMOSPHERIC NITROGEN THANKS TO **RHIZOBIUM**

#### **R** RHIZOBIUM

PTB160 Technology  
(pea & lentil) *Rhizobium leguminosarum biovar viciae*  
PTB162 Technology (soybean)  
*Bradyrhizobium japonicum*  
PTB161 Technology (chickpea)  
*Mesorhizobium ciceri*

- + Increases nodulation
- + Fixes nitrogen
- + Provides nutrients to pulses



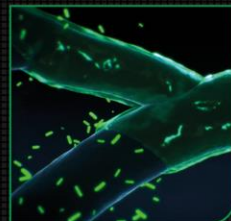
### AGTIV. STIMULATE

AGTIV® STIMULATE™ REINFORCES PLANTS WITH A HEALTHY ROOT ZONE THANKS TO **BACILLUS**

#### **B** BACILLUS

PTB180 Technology,  
*Bacillus pumilus*  
PTB185 Technology,  
*Bacillus inaquosorum*

- + Stimulates rooting environment
- + Improves plant establishment
- + Increases plant vigor and productivity



Learn more at

[PTAGTIV.COM/en/technologies](https://ptagtiv.com/en/technologies)

CLICK ON A PICTURE TO SEE THE TECHNOLOGY IN ACTION

Since entering the agriculture market 15 years ago, we are constantly widening our AGTIV® inoculant offering to suit and benefit more crops.

While staying true to the AGTIV® brand's three pillars:

**NATURE, SCIENCE** and **PERFORMANCE**, we are introducing new product names reflecting the actions of our inoculants for plants.

**AGTIV® FUEL**  
Single action **rhizobium** products FUEL legumes by fixing nitrogen for better growth.

**AGTIV® THRIVE**  
Dual action **mycorrhizae** and **rhizobium** products make plants THRIVE by increasing nutrient uptake.

**AGTIV® ENRICH**  
Dual action **rhizobium** and **Bacillus** collaborate to ENRICH the plant's nitrogen fixation with a healthy root system.

**AGTIV® STIMULATE**  
Single action **Bacillus** products STIMULATE the plant to grow more efficiently with a healthy root zone.

**AGTIV® IGNITE**  
Single action **Serendipita** products IGNITE plant growth and chlorophyll content for better yields.

**AGTIV® REACH**  
Single action **mycorrhizae** products REACH into the soil and help uptake more nutrients and water.

# AGTIV®

**DESIGNED BY NATURE.  
PERFECTED BY SCIENCE.**

Born from **nature** and perfected by **science**, AGTIV® is an innovative technology brand made of high-quality and proven natural active ingredients that deliver superior **performance** for agricultural producers.

Discover more at

[PTAGTIV.COM/brand](https://PTAGTIV.COM/brand)



# ONLINE TOOLS



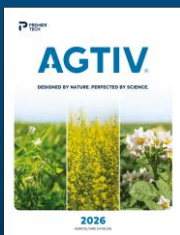
**LABELS**



**EFFICACY REPORT**



**APPLICATION VIDEOS**



**BROCHURES**



**SOCIAL MEDIA**

**AND MUCH MORE**

[Safety data sheets](#), [organic certificates](#)

